

# Dakota™

Quality for Life

## ONE PIECE TOILET INSTALLATION INSTRUCTIONS

Model: DSW-WL518



To ensure this product is installed properly, please read these instructions carefully before you begin.

Certain installations may require professional help. Also, be sure your installation conforms to local codes.

**CAUTION: HANDLE WITH CARE. VITREOUS CHINA IS FRAGILE AND WILL PRODUCE SHARP EDGES IF BROKEN.**

NOTE: Pictures may not exactly define the contour of the toilet and its components.

### RECOMMENDED TOOLS AND MATERIALS:

- Putty Knife
- Hacksaw
- Adjustable Wrench
- Sealant
- Tape Measure
- Flathead Screwdriver
- Flexible Supply Hose
- Water Supply Kit
- Carpenter's Level

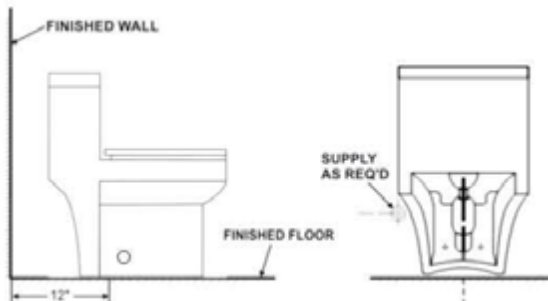
## 1 REMOVE OLD TOILET

- Turn off water supply valve and flush tank completely. Towel or sponge remaining water from tank and bowl.
- Disconnect and remove old water supply line. Note: If replacing valve, first shut off main water supply!
- Remove old mounting hardware, remove toilet and plug floor flange to block sewer gases from escaping.
- Remove closet bolts from flange and clean away old wax, putty, eel, from base area.

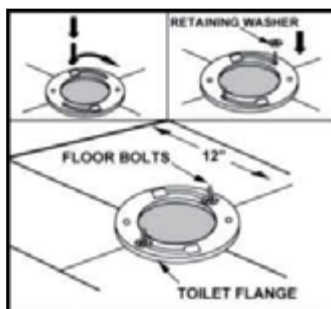
**NOTE: MOUNTING SURFACE MUST BE CLEAN AND LEVEL BEFORE NEW TOILET IS INSTALLED**

## 2 ROUGHING-IN DIMENSIONS:

NOTE: Distance from wall to closet flange centerline must be as listed on chart



## 3 INSTALL CLOSET BOLTS



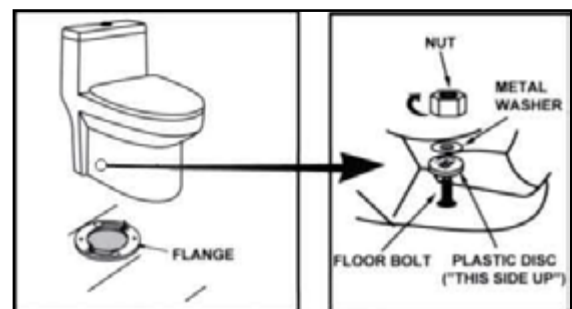
Insert floor bolts into flange channel with bolt head down. Use plastic retaining washers to hold the bolts in place. Floor bolts should be parallel to wall and 6" (152mm) apart.

## 4 INSTALL WAX RING



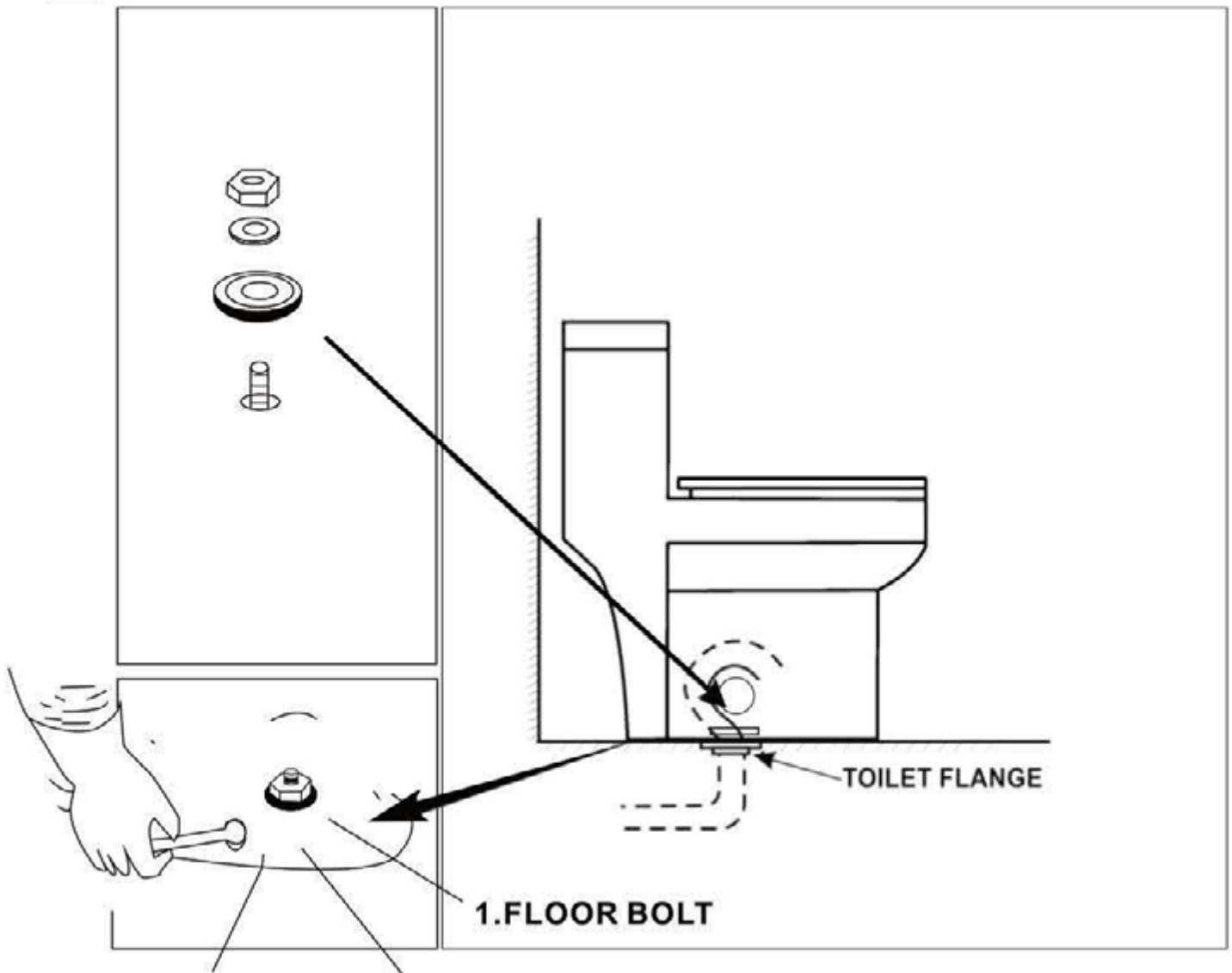
Turn toilet bowl down onto a towel or cushioned surface. Place the wax ring around the draining outlet of the bowl, and press firmly. Apply a thin bead of sealant around toilet base.

## 5 POSITION TOILET BOWL ON FLANGE



- Unplug floor waste opening, gently place the bowl in position with the floor bolts protruding upwards through the hole in the base.
- Press down with a slight twisting motion on the top center of the bowl to compress the wax ring, creating a water-tight seal.
- Place plastic disc, metal washers and nuts onto floor bolts

**6 INSTALL TOILET**



**2 WASHER 3. NUT**

A. Using a hacksaw, cut off excess length of floor bolts so bolt caps will fit (leave no more than 1/4" length above nuts.) Next, tighten nuts until toilet bowl is firmly seated on floor.

**DO NOT OVERTIGHTEN NUTS BECAUSE VITREOUS CHINA CAN EASILY CRACK OR CHIP.**

- B. Pour water into bowl to prevent the escape of sewer gases.
- C. Place bolt caps over floor bolts and press down for secure fit.
- D. Smooth off the bead of sealant around base. Remove excess sealant.