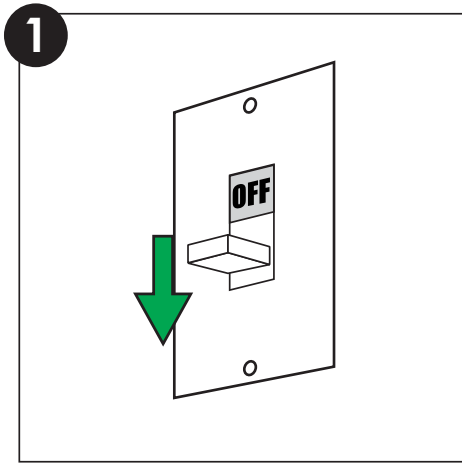
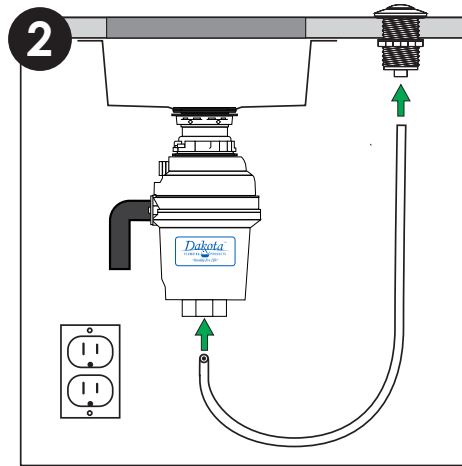


# Dakota Signature Garbage Disposal Wall Power Installation (without air-switch)

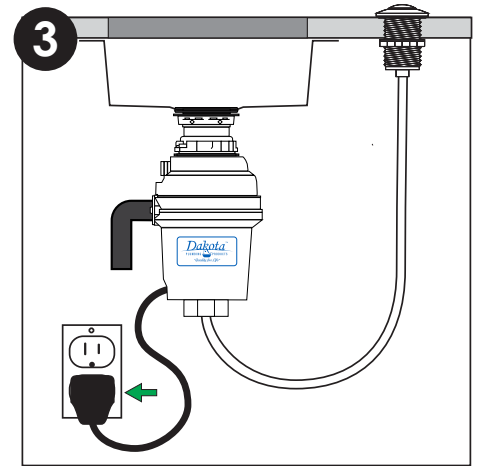
Follow these steps to bypass the air switch and operate from wall switch power.



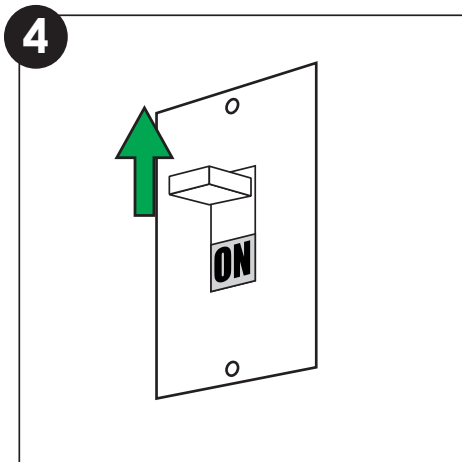
1) First make sure the wall switch is OFF.



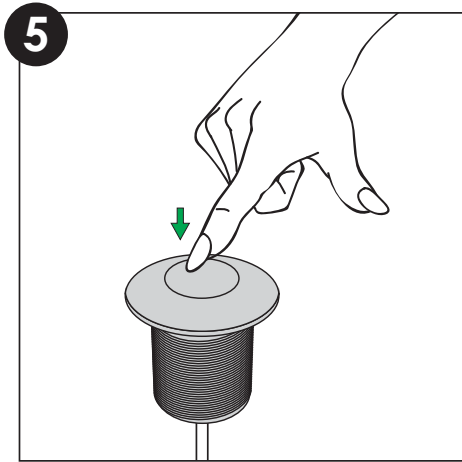
2) Connect one end of the air tube to the disposal, and the other end to the button.



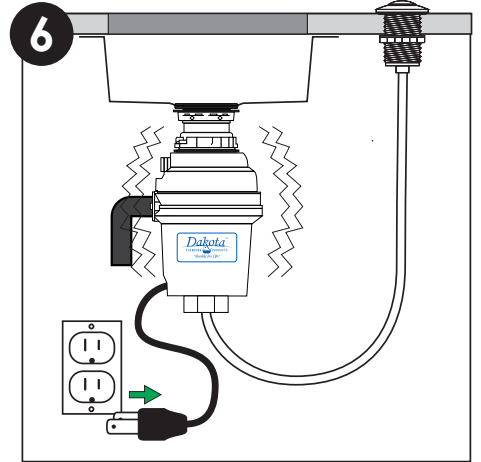
3) Plug the disposal power cord to the outlet underneath counter/sink.



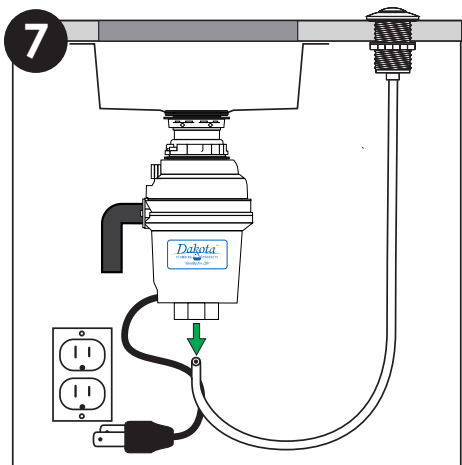
4) Turn the wall switch ON.



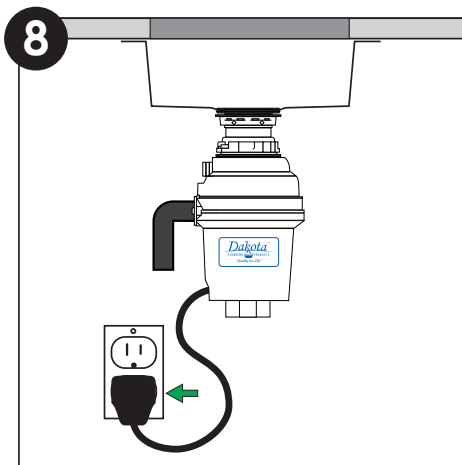
5) Press the air switch button to turn the disposal ON



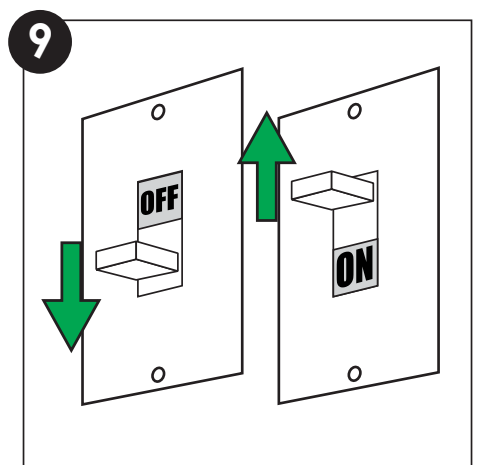
6) While running, unplug the disposal power cord from the outlet



7) Remove the air switch tube. The button is no longer needed.



8) Plug the disposal power cord back into the outlet underneath the counter/sink.



9) Turn the wall switch OFF and then back ON to confirm it is operating.